



التلقيح الاصطناعي
Artificial Insemination
(AI

م. أشرف كامل عزيز

التلقيح الاصطناعي: عبارة عن تدخل الإنسان لإيداع الحيوانات المنوية داخل رحم الأنثى بدلاً عن الذكر باستخدام أدوات اصطناعية

ما هي

طرق جمع السائل المنوي؟

وما هي أفضل طريقته؟

1. وضع الأسفنجة داخل المهبل

2. طريقة الاسترداد

3. تدليك الأمبولا

4. التحفيز الكهربائي

5. المهبل الاصطناعي









ماهي الخطوات
اللاحقة لعملية جمع
السائل المنوي؟

1. فحص

2. تخفيف

3. تيريد

4. تجميد



SELECT  SIRES

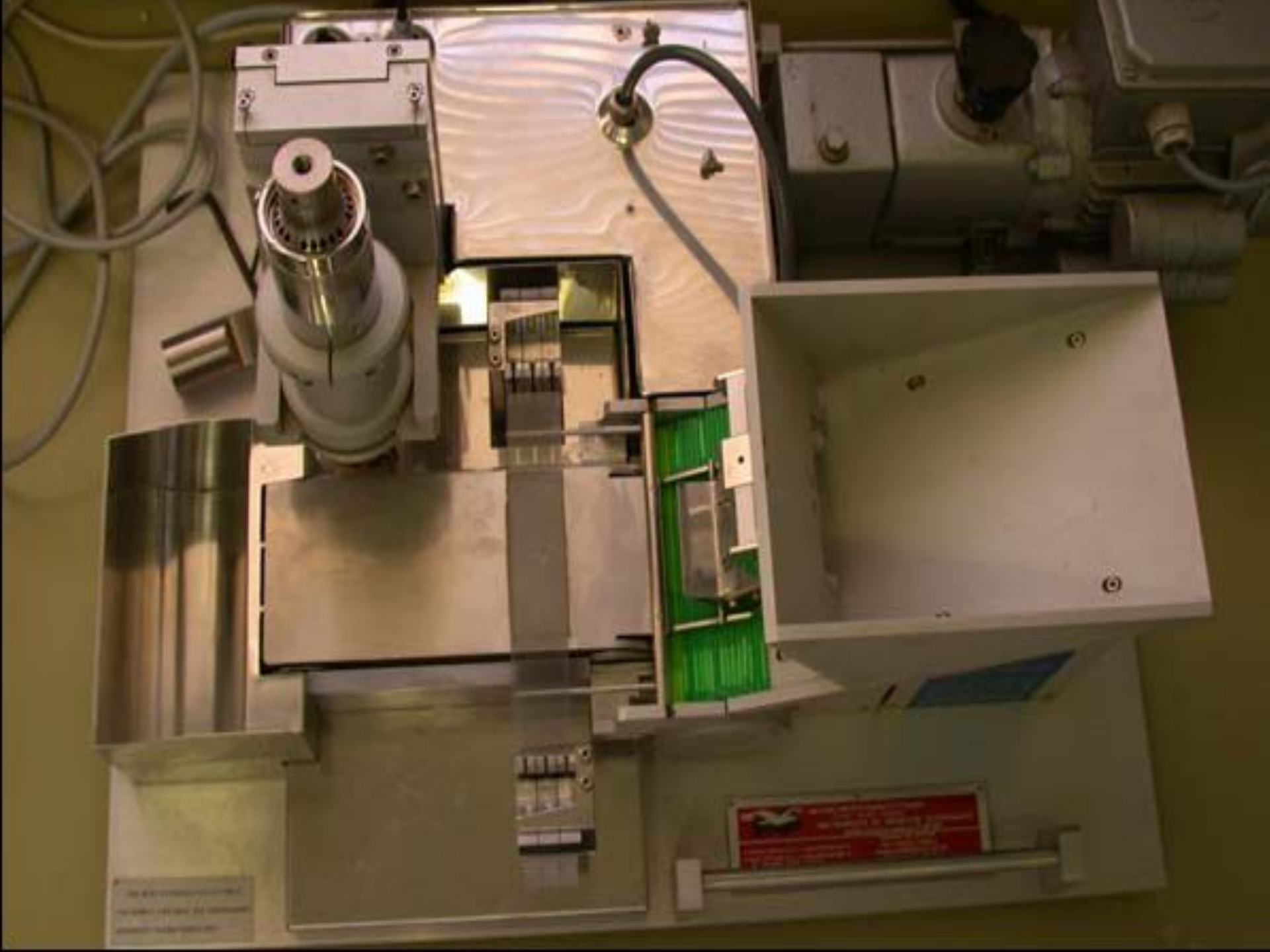


Manufactured
in the U.S.A. by
Continental Plastics



Reproductive Solutions™

Volume 1000
100 Sires Per Box



نم یحرن





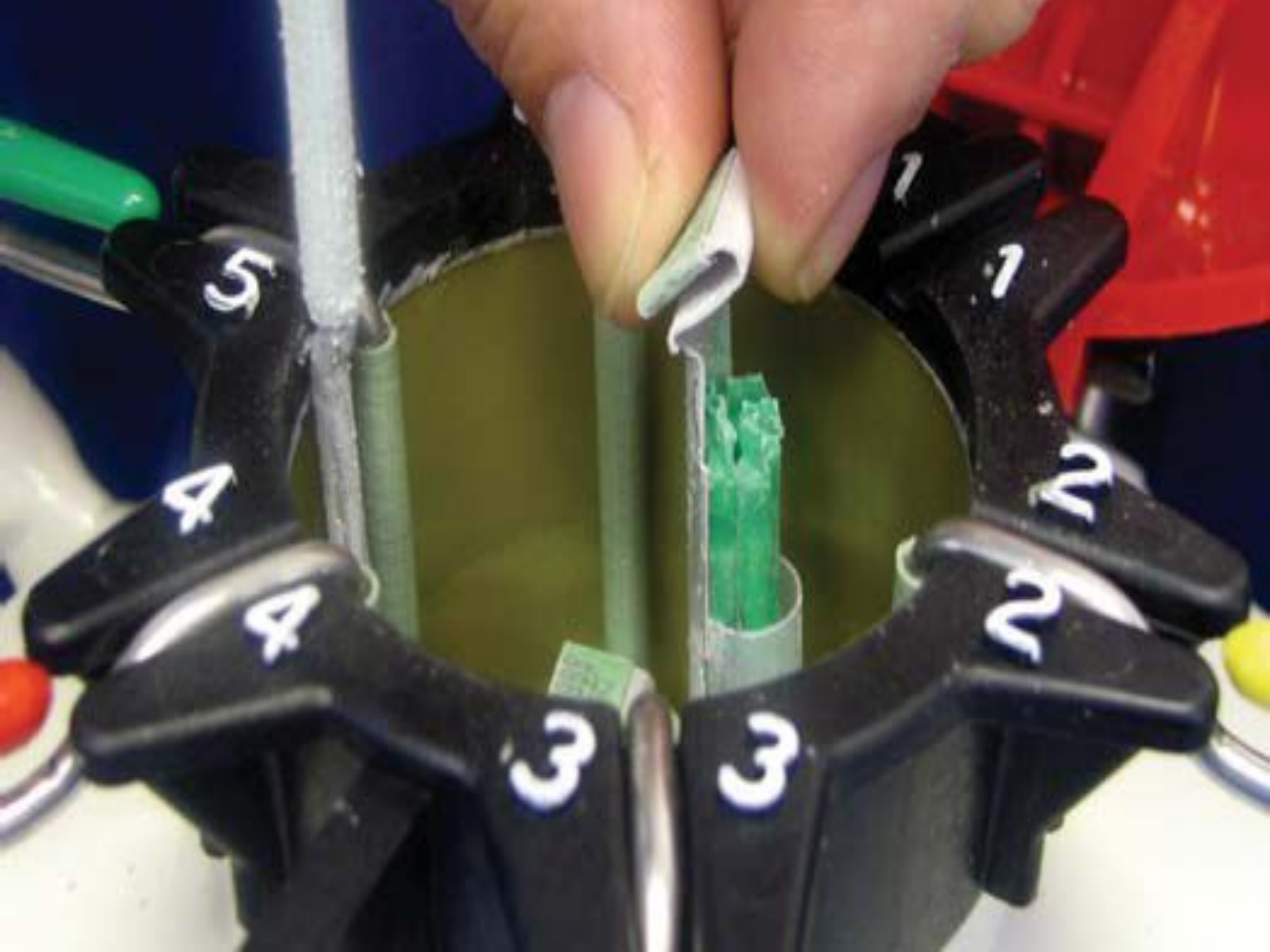
15

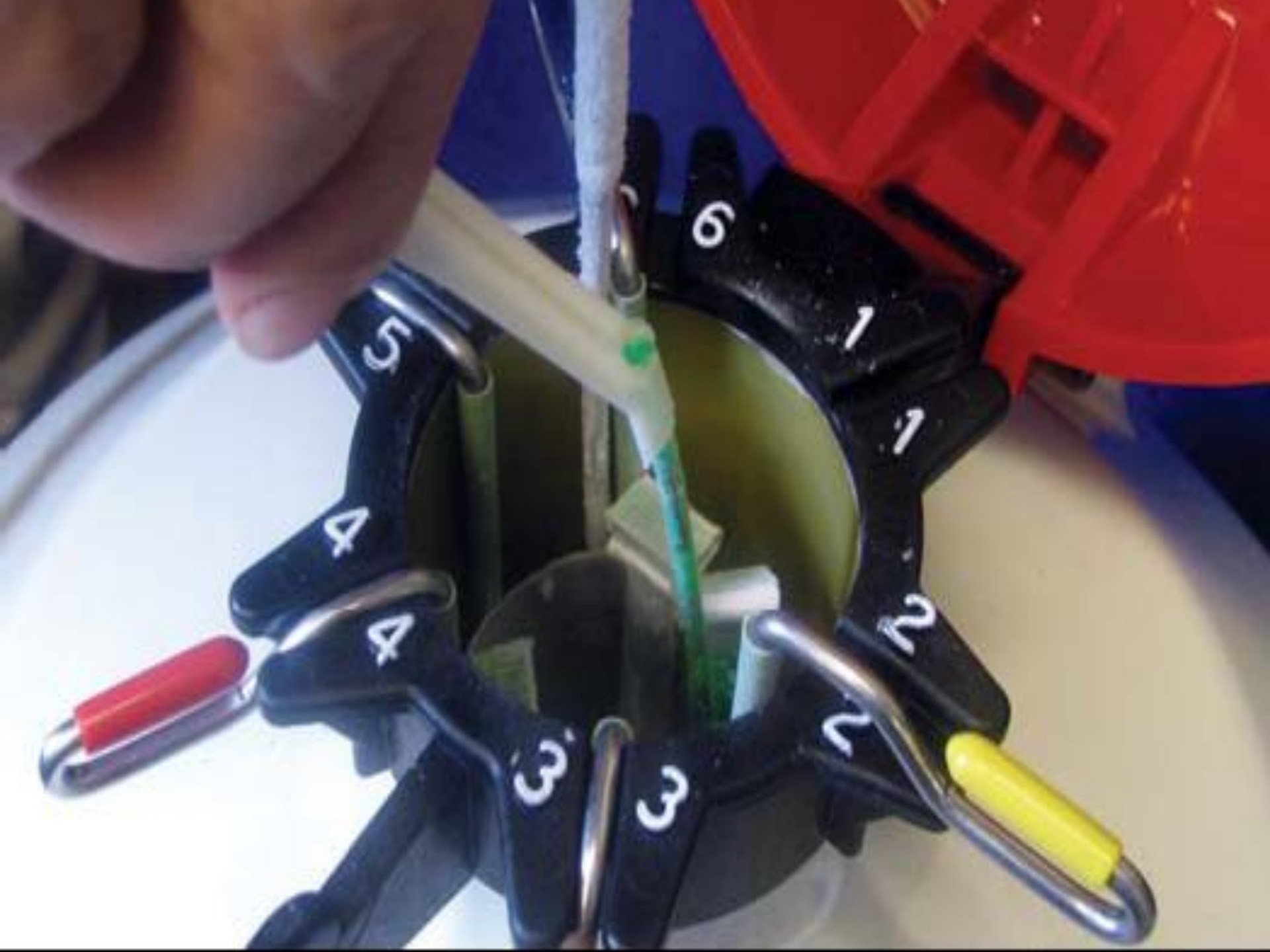
SERIAL NO.
1234567890
PART NO.











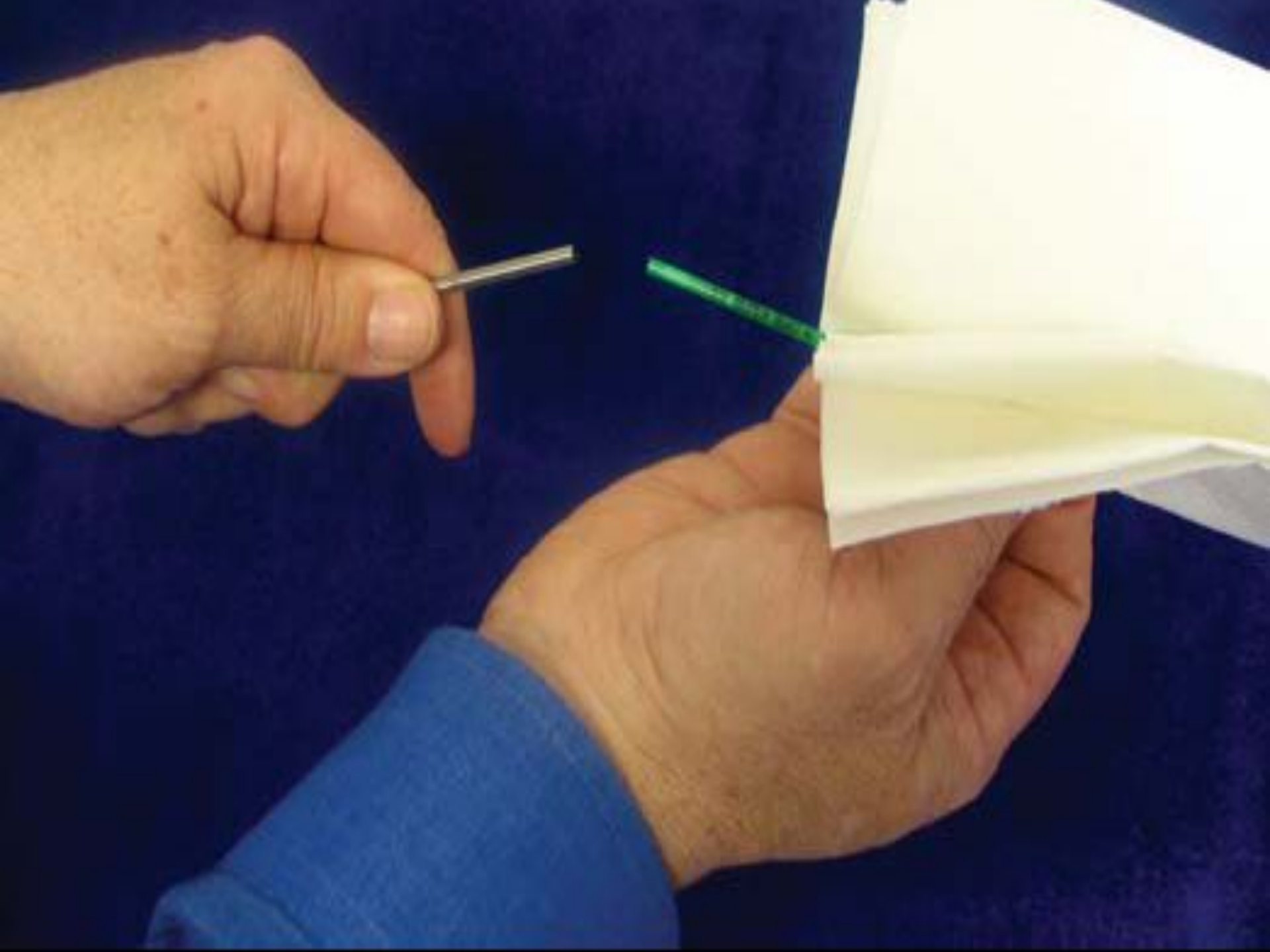
7H9999
PRACTICE





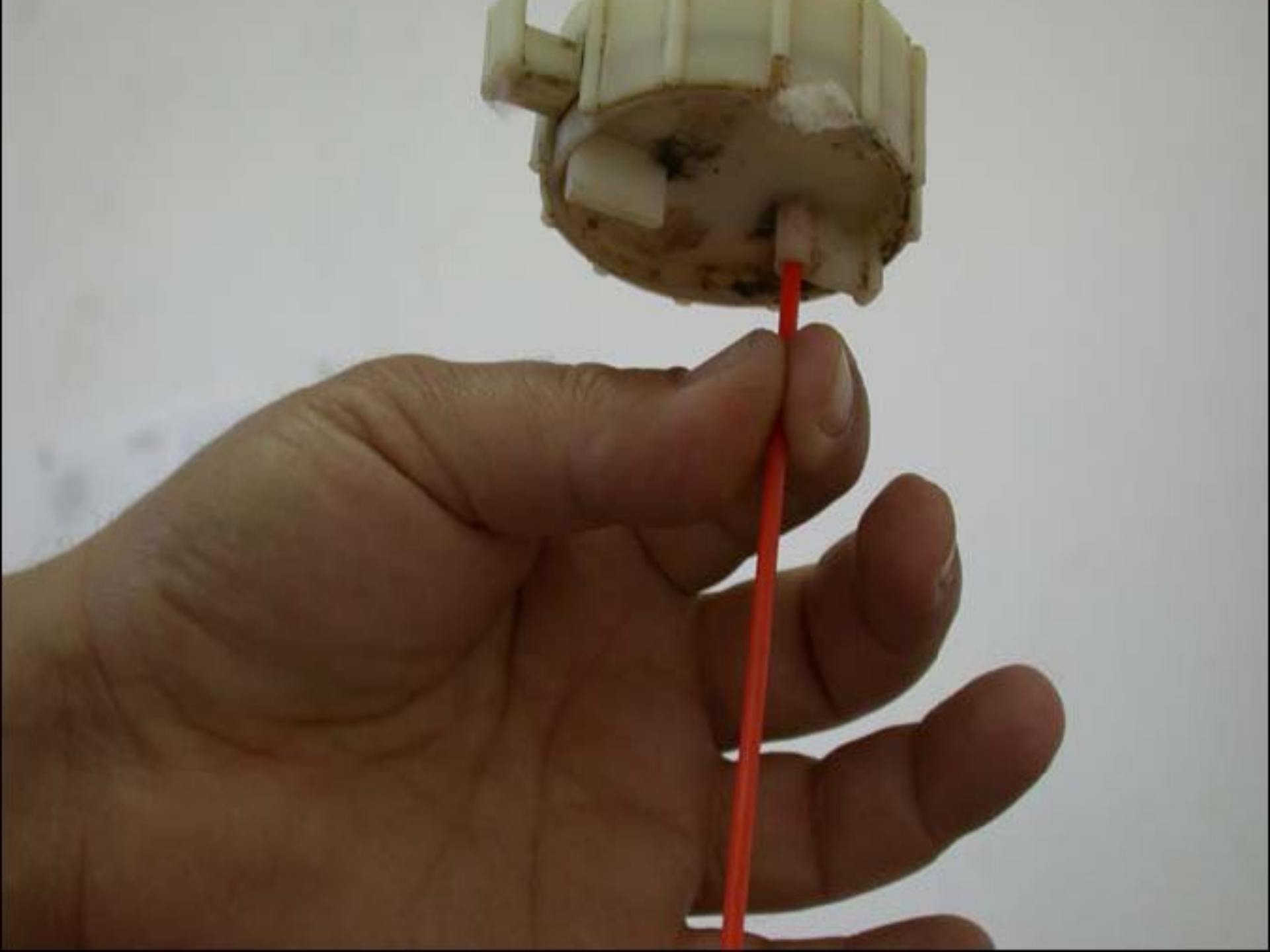


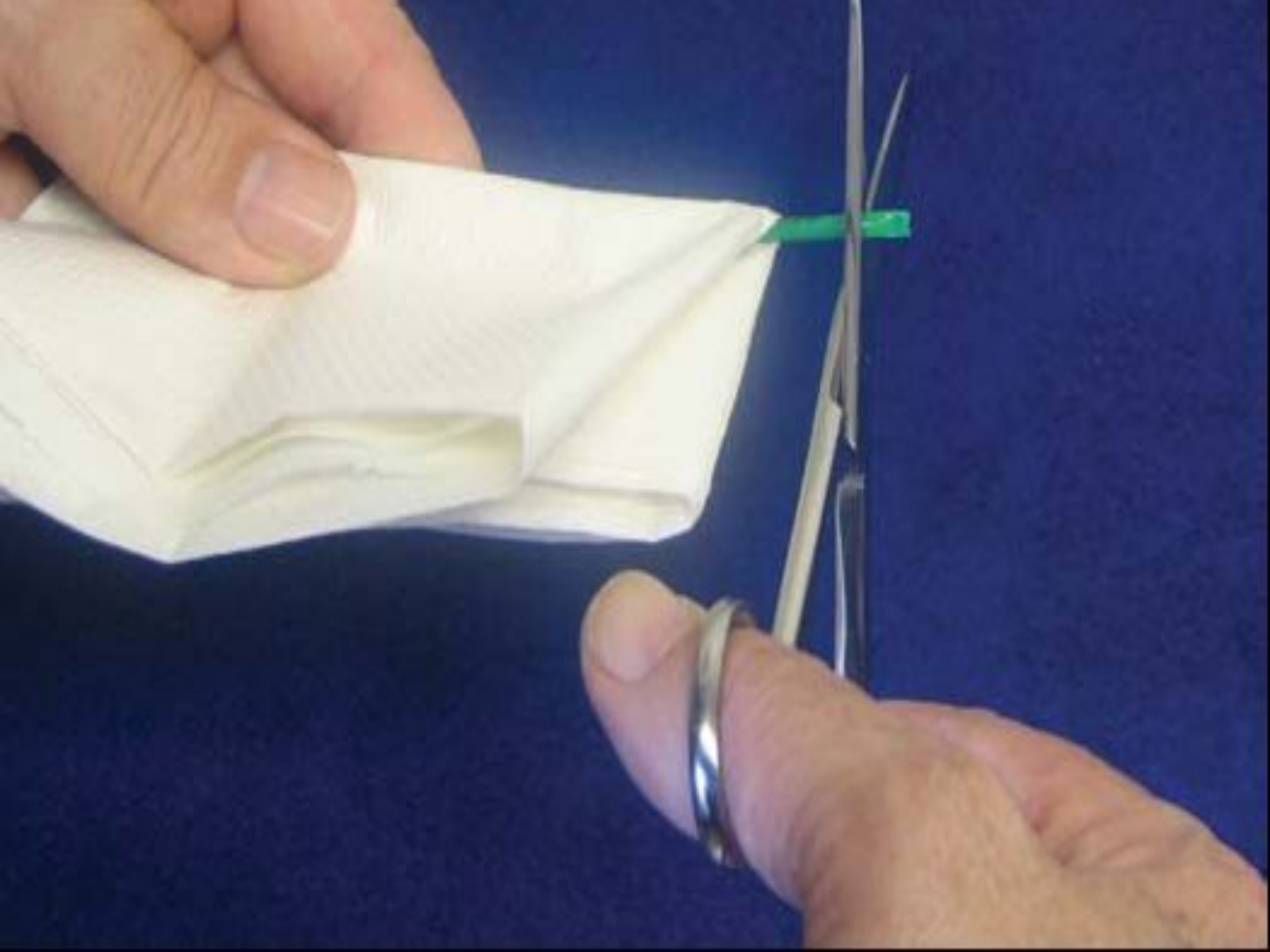








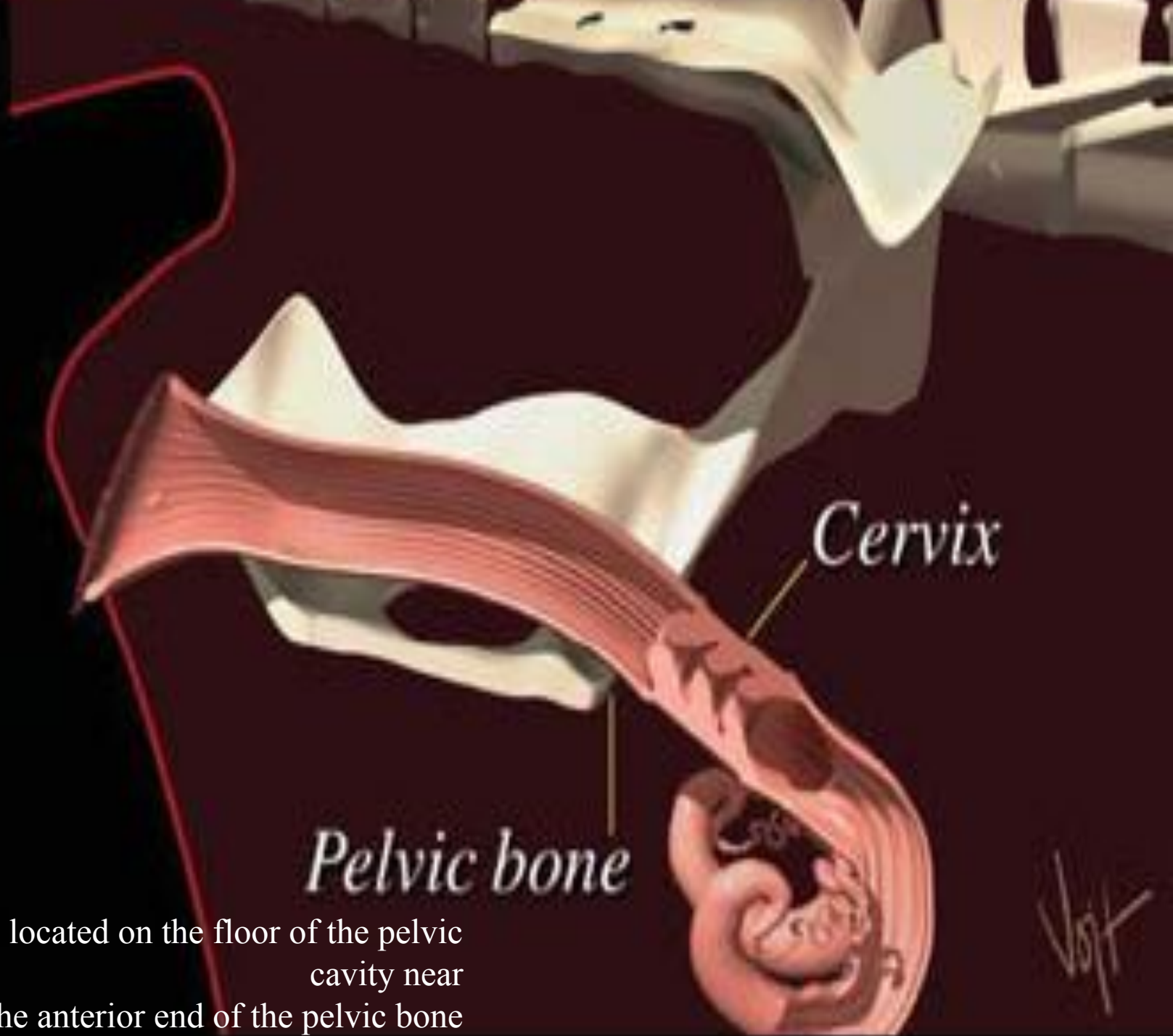






Reproductive
Solutions™



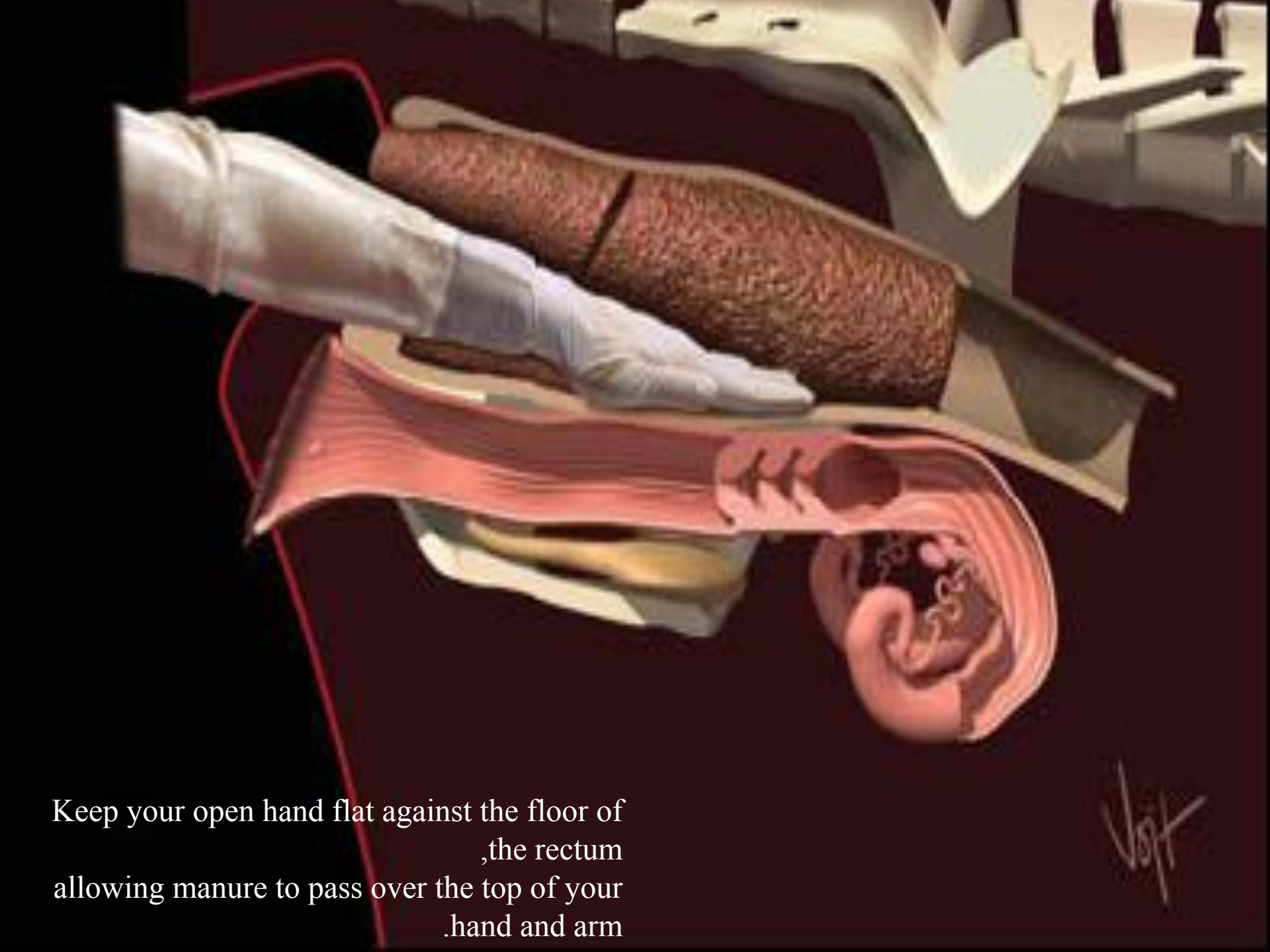


Cervix

Pelvic bone

The cervix is located on the floor of the pelvic cavity near the anterior end of the pelvic bone

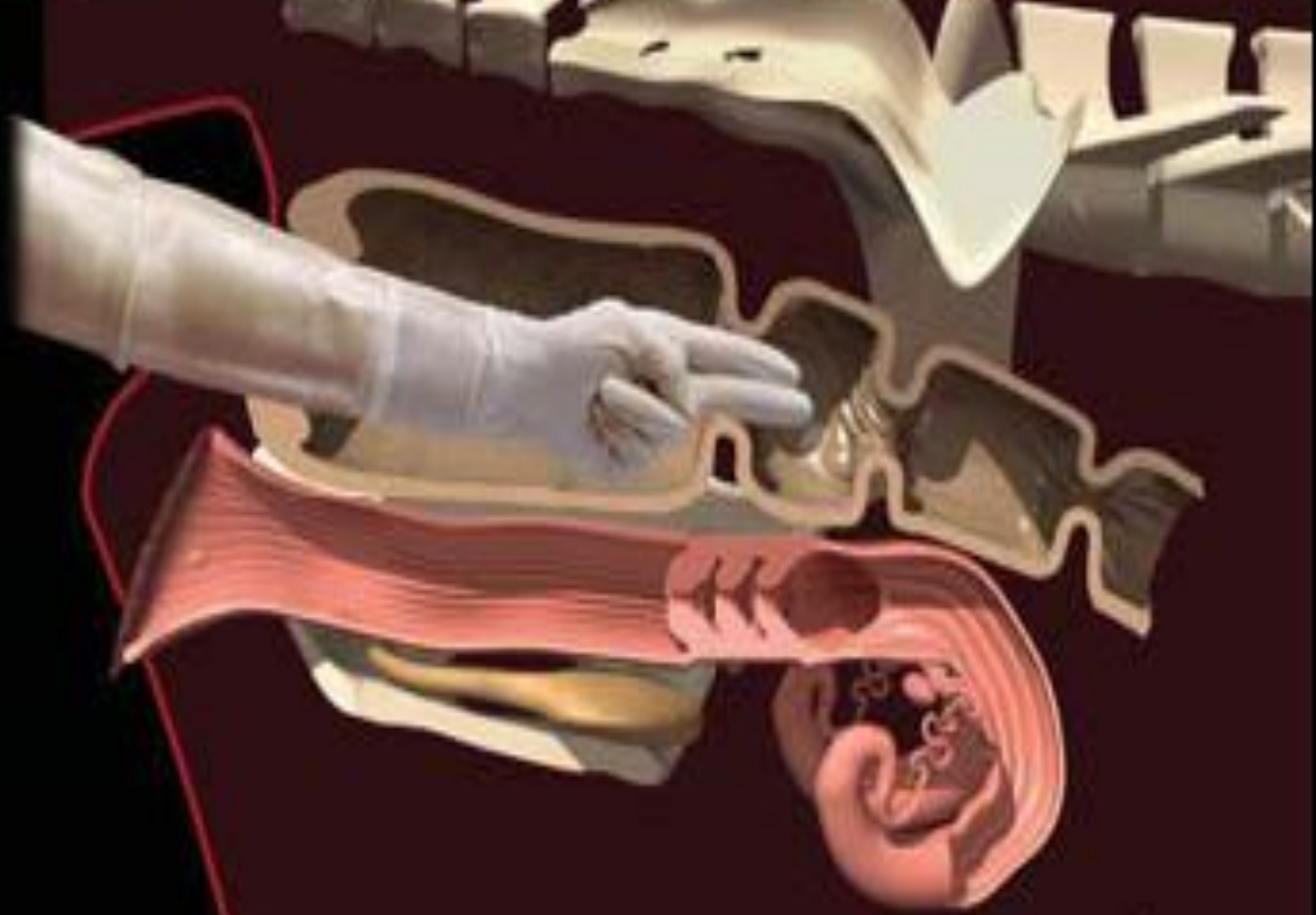




Keep your open hand flat against the floor of
the rectum
allowing manure to pass over the top of your
hand and arm

Vof

To relax rectal constriction rings, insert two fingers through the center of the ring and massage back and forth

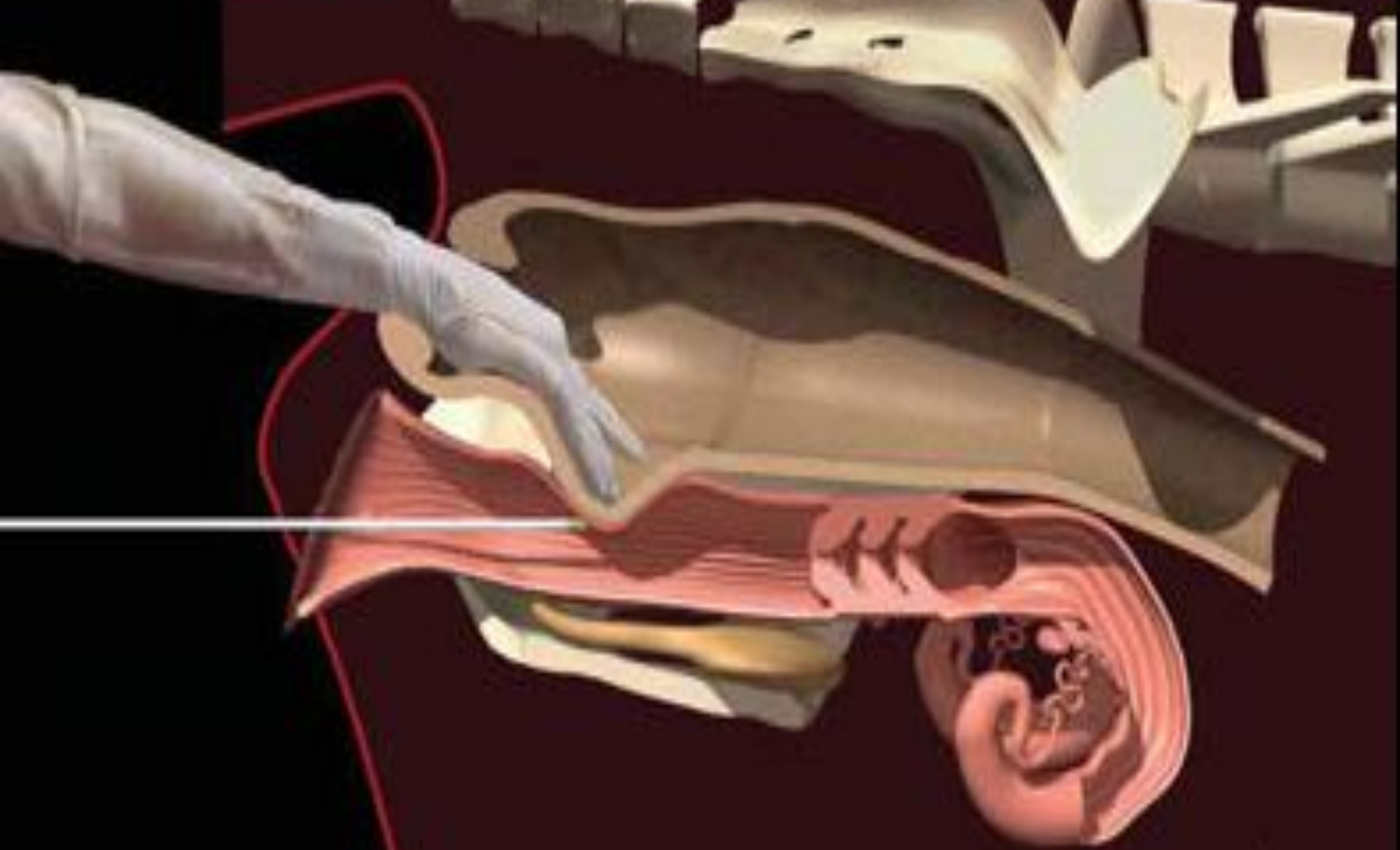


cervix



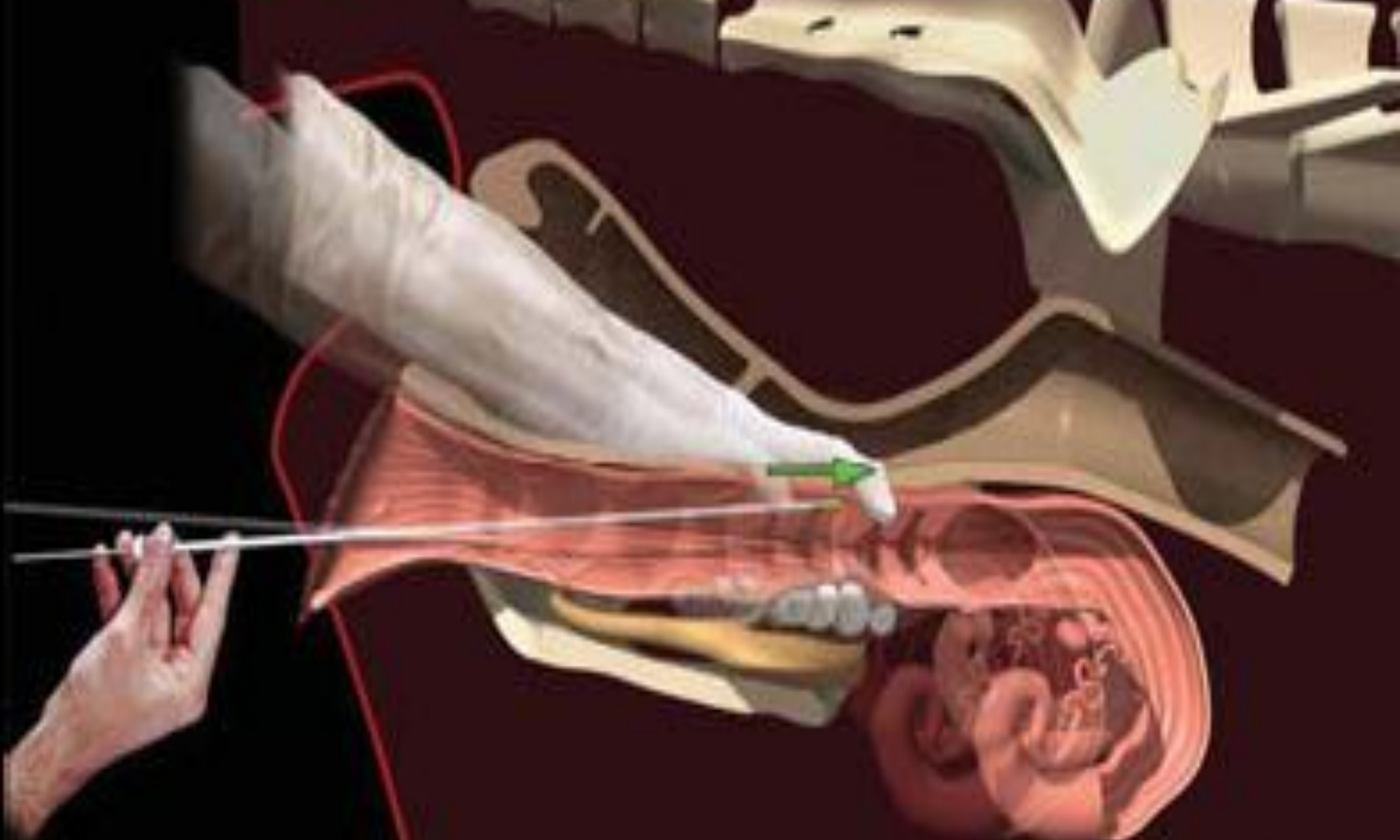
The opening into the cervix protrudes back into





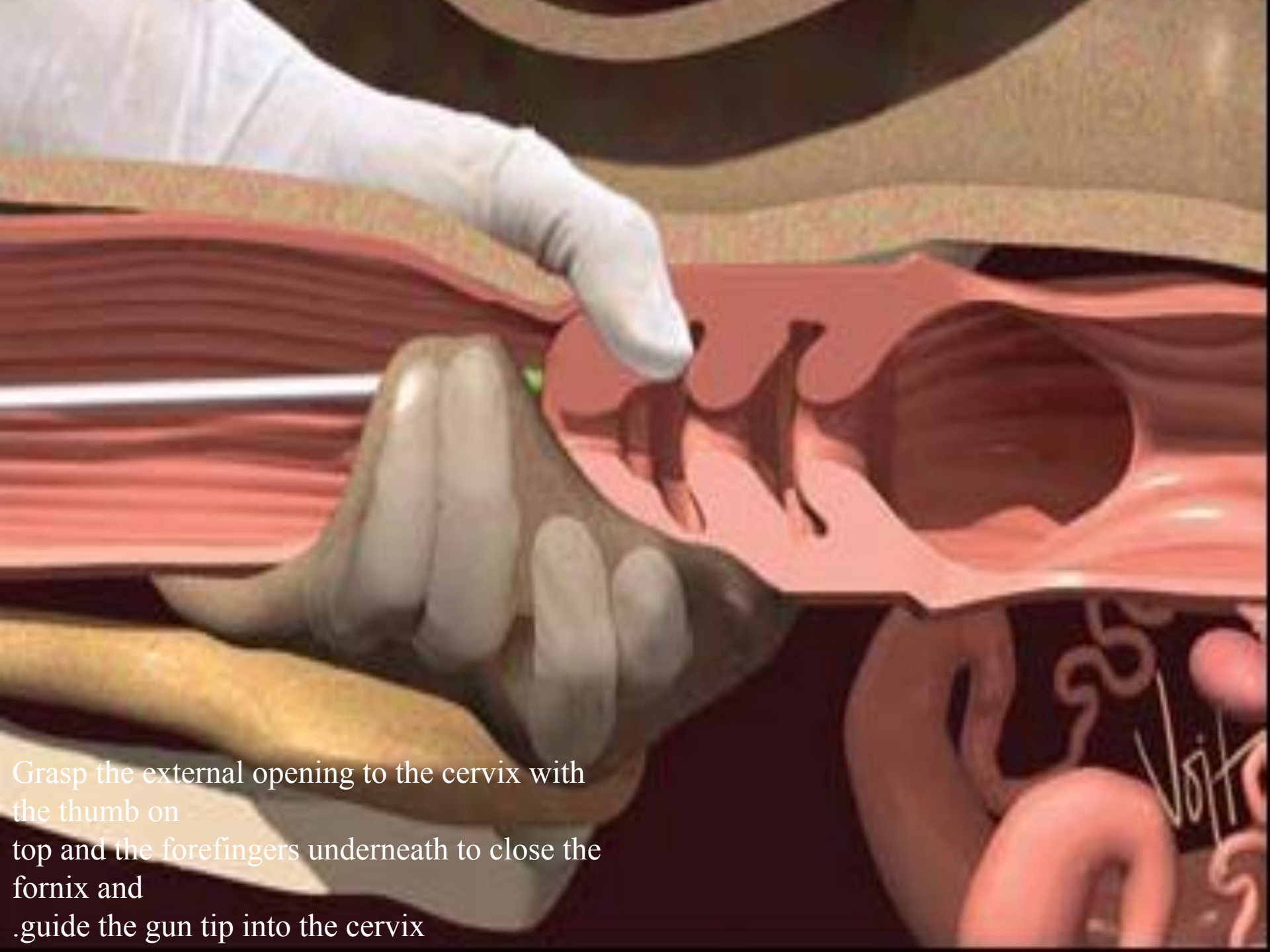
As you insert the breeding gun into the vagina,
keep your
gloved hand even with the gun tip

Vot

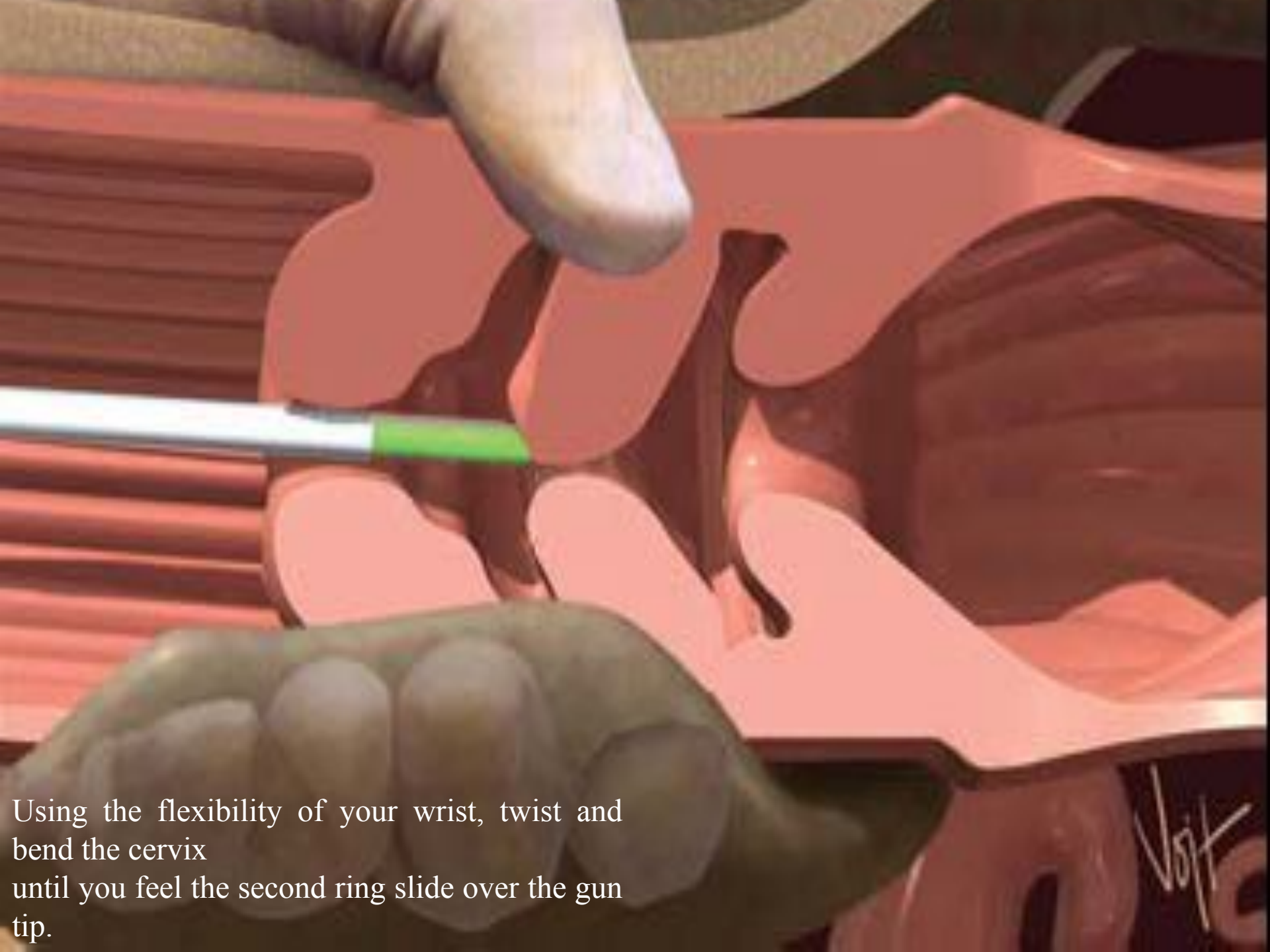


Grasp the cervix and push it forward to
straighten vaginal
.folds

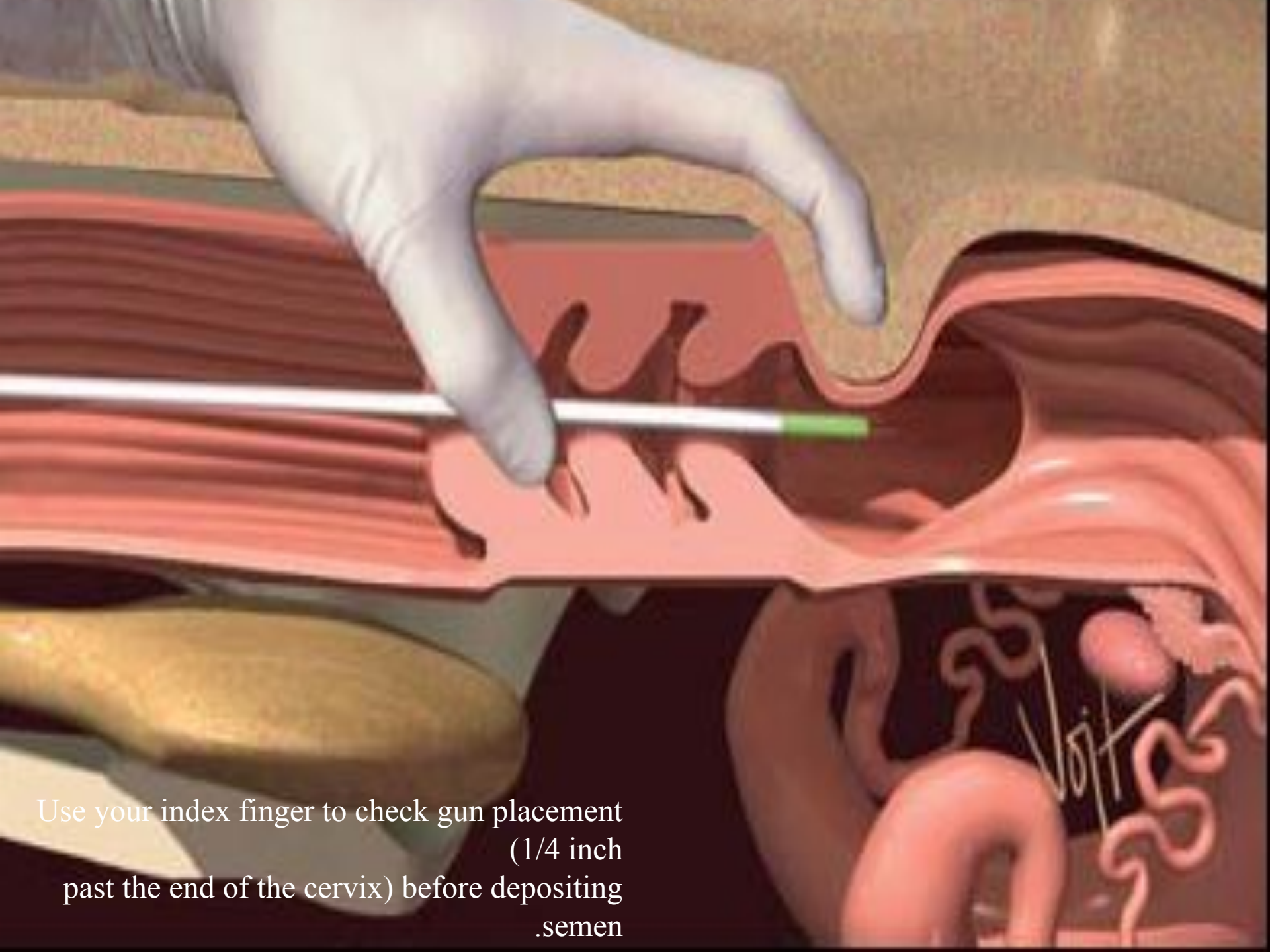
Vojt



Grasp the external opening to the cervix with the thumb on top and the forefingers underneath to close the fornix and .guide the gun tip into the cervix

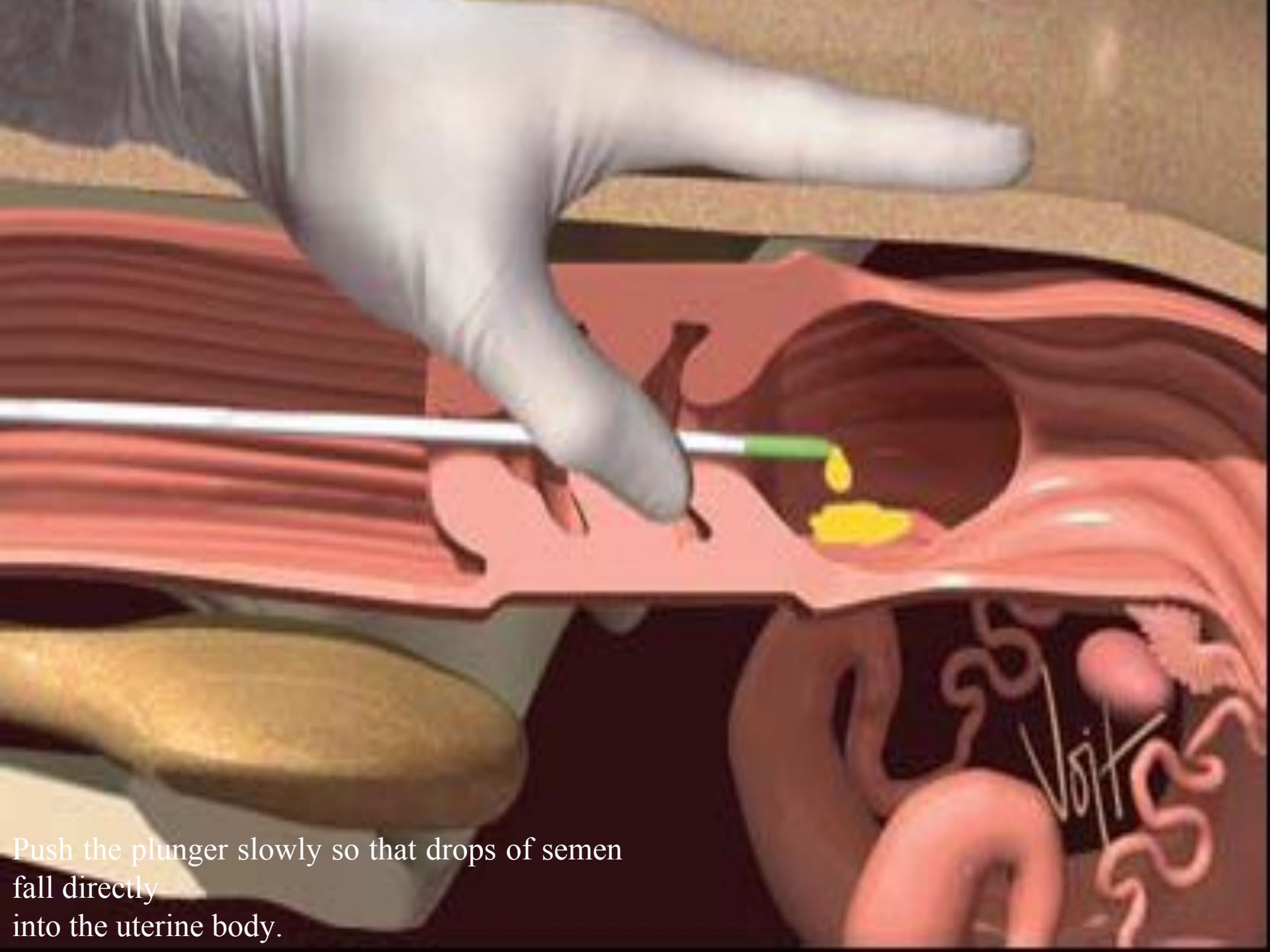


Using the flexibility of your wrist, twist and bend the cervix until you feel the second ring slide over the gun tip.

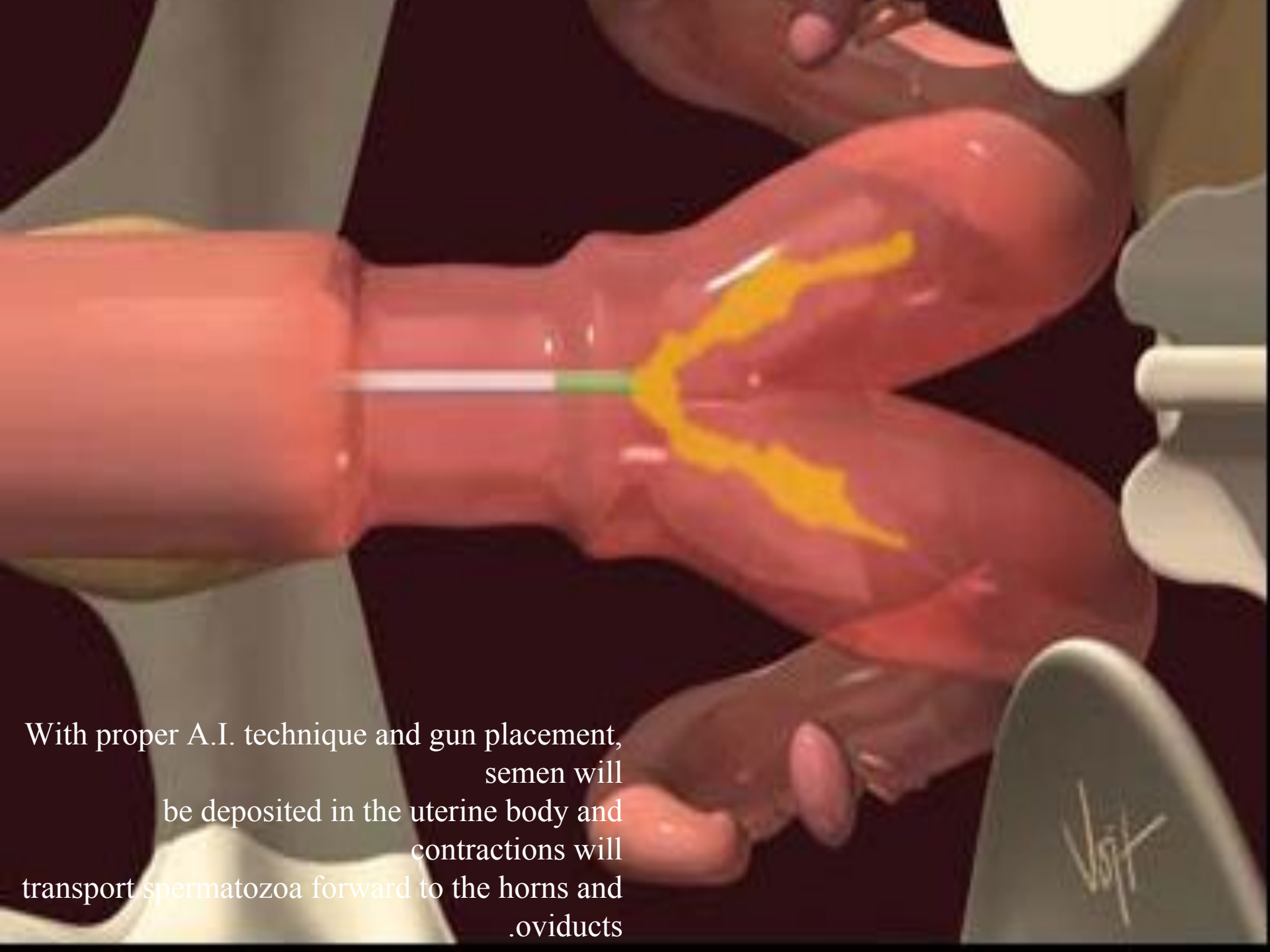


Use your index finger to check gun placement
(1/4 inch
past the end of the cervix) before depositing
.semen

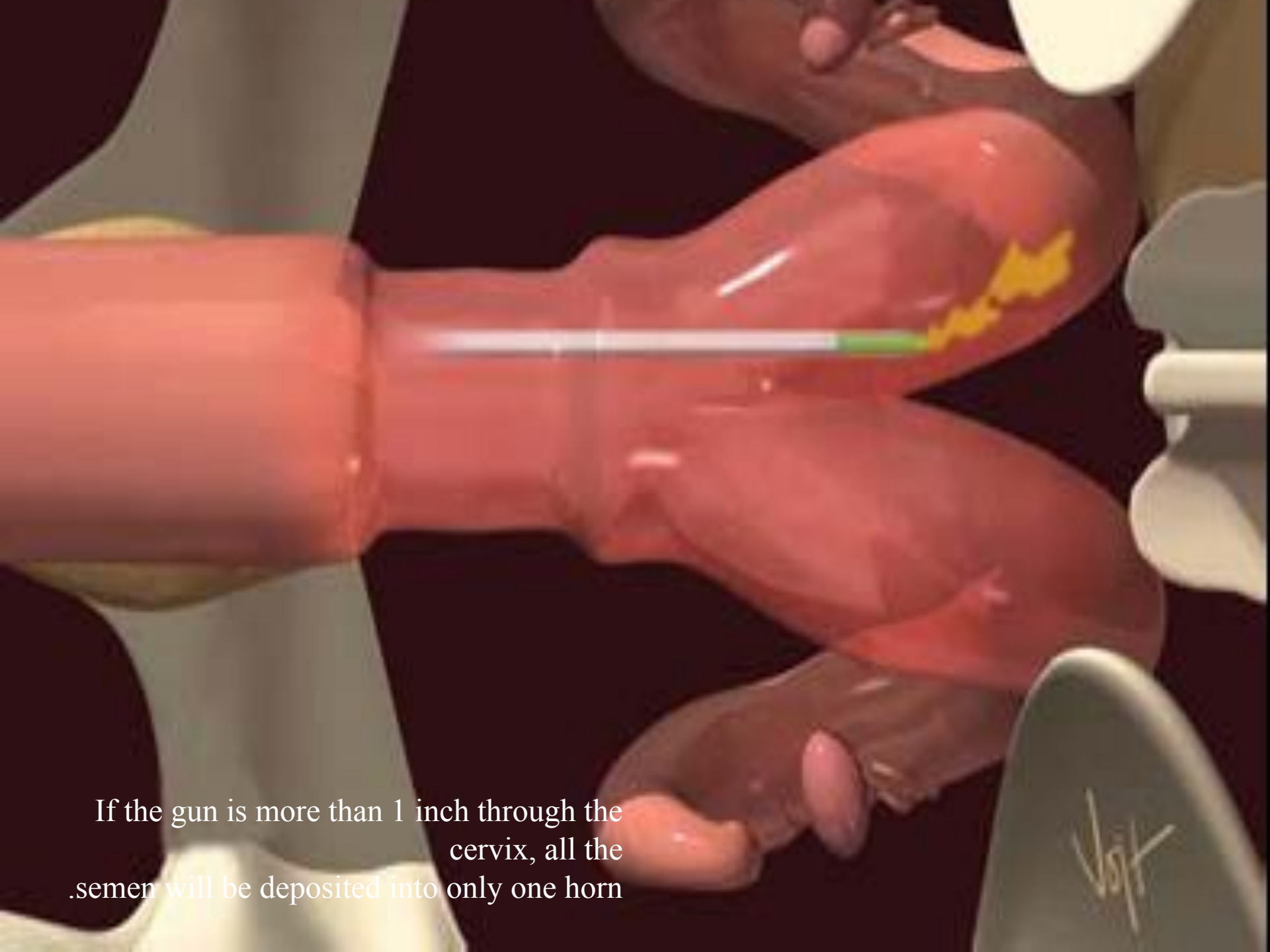




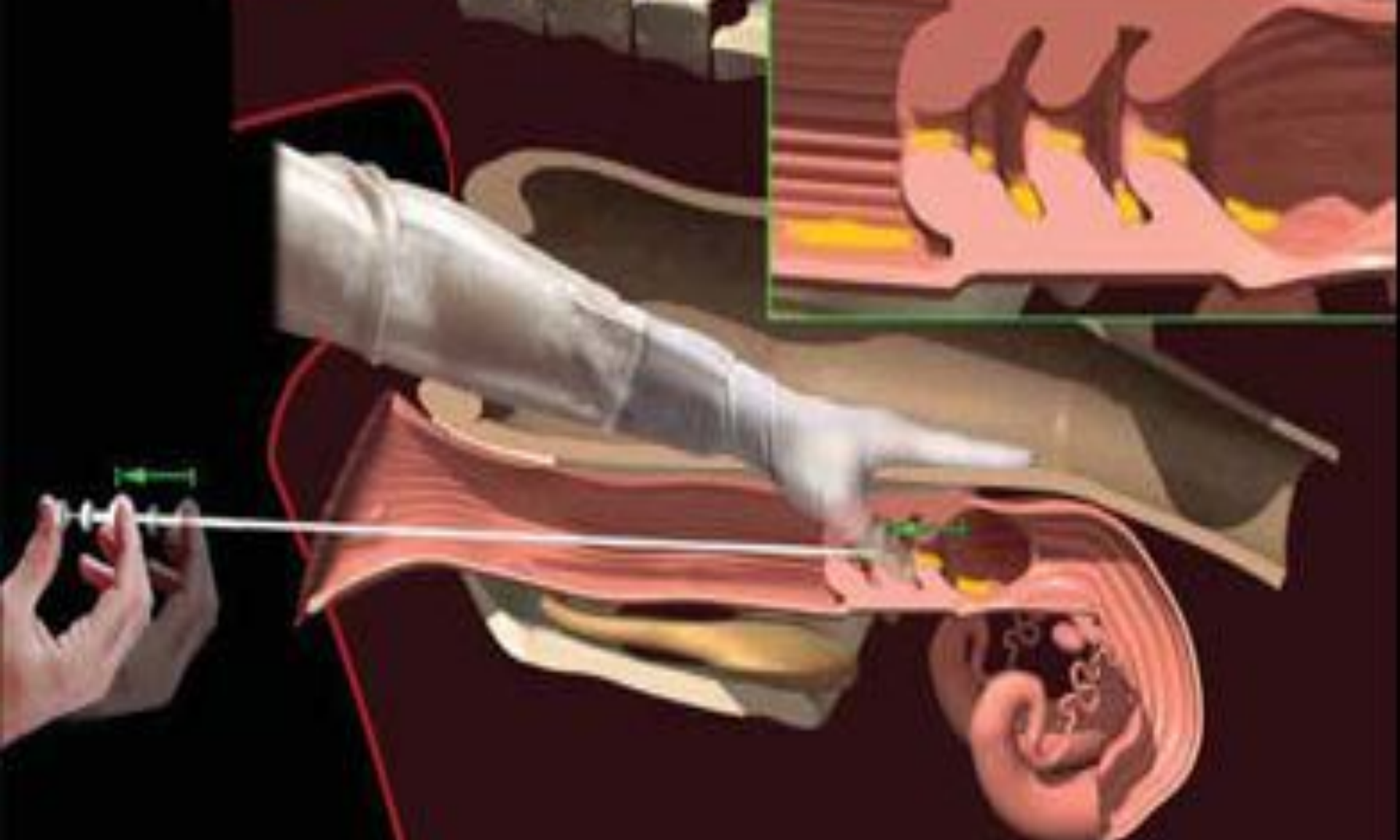
Push the plunger slowly so that drops of semen fall directly into the uterine body.



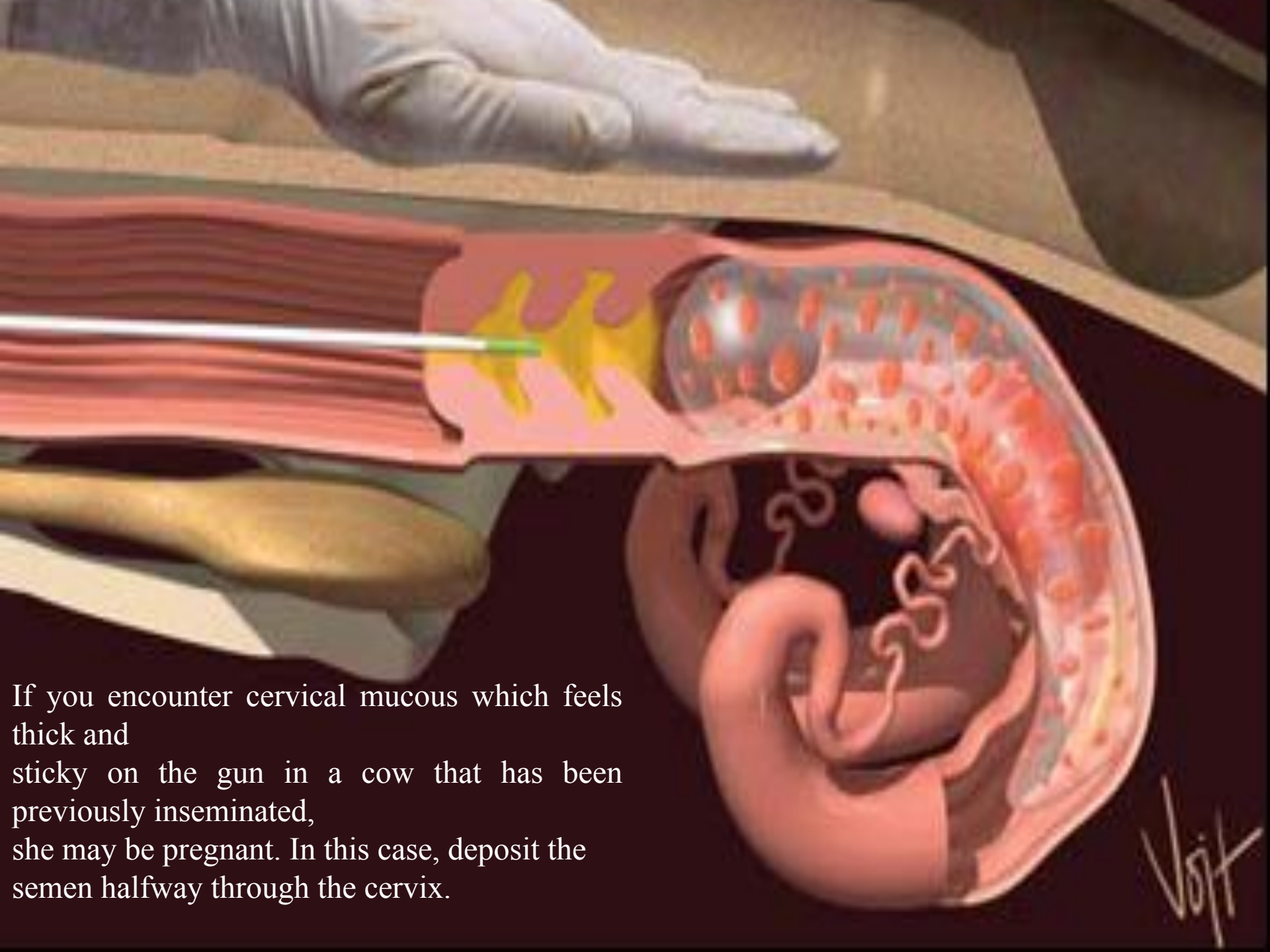
With proper A.I. technique and gun placement,
semen will
be deposited in the uterine body and
contractions will
transport spermatozoa forward to the horns and
oviducts



If the gun is more than 1 inch through the cervix, all the semen will be deposited into only one horn



Make sure you push in with the plunger and do not pull back on the gun. Pulling back may result in much of the semen dose being deposited in the cervix and vagina.



If you encounter cervical mucous which feels thick and sticky on the gun in a cow that has been previously inseminated, she may be pregnant. In this case, deposit the semen halfway through the cervix.

